



**Wolverhampton
Clinical Commissioning Group**



**Report of Milestone Review Board :
Assurance Report Quarter 1 2018/19**

Contents

- Work Programme(s) Overview
 - Primary Care Strategy
 - GPFV
- Commissioned Services
- Enhanced Services (including QOF+)
- Practice Group Referrals

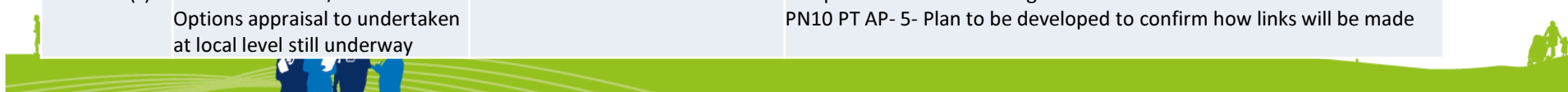


Work Programme(s) Overview



Work Programme Overview – Primary Care Strategy

	Practices as Providers	GP as Commissioners	Workforce
No of Live Activities	2	6	5
No Closed Activities	6	12	16
Quarter 2 Priorities	<p>Frailty- Present Evaluation on pathway redesign opportunities and recommendations to Task and Finish Group/ PCPB Interviews/ offer positions for home visiting service</p> <p>Draft operating protocol for Risk Strat/ MDT</p> <p>present QOF data Q1 at task and finish group</p> <p>collate and review the outcomes of Qrt 1 Peer Review</p> <p>Review of Terms of Reference at Task and Finish Group</p>	<p>The outcomes of Qrt 1 2018/19 PPG Chairs Meetings and members meetings to be presented to the Task and Finish Group for discussion and review</p> <p>Review Group Delivery Plans at the Task and Finish Group</p> <p>Practice Commissioning Intentions and Feedback to be collected</p> <p>Practice dashboard including practice profiles to be finalised and utilised</p> <p>Care Navigation Cohort 2 launched</p> <p>roll out of A&G resource pack</p> <p>Monitoring of 10HI actions and Improving Access activity</p> <p>Review of TOR at Task and Finish Group</p>	<p>Q1 achievements and issues reported in workbook and shared with Task and Finish Group and Milestone Review Board</p> <p>undertake training needs analysis for clinical roles identifying where new roles should be introduced/implemented</p> <p>In conjunction with group managers and CCG Teams ensure workforce data correlates with wider Primary Care dashboard</p> <p>Promote PA role via PA ambassador and response to next steps for CCT fellowships and IGPR. Promote portfolio careers in line with RWT</p> <p>Promote retention schemes, access to leadership training and opportunities</p> <p>Banner advertising RGGP encouraging retention of trainees and promote roles in GP that may be of interest to local community.</p> <p>Implement schedule of linked In posts and website updates to promote primary care in Wolverhampton</p> <p>Consultation of Practice Nurse Strategy across the STP</p> <p>NHSE of assurance requirements implemented</p> <p>GPFV Workforce stocktake</p> <p>spending intentions confirmed in Training and Development plan 2018/19 & 2019/20, Training and development needs identified</p> <p>Review guidance from HEE - general practice nursing and work with training hubs</p> <p>Monitor placement sites and mentor training</p> <p>Develop preceptor and induction strategy</p> <p>monitor the uptake to return to practice</p> <p>MEC Opportunities</p>
Exception(s) to Critical Path Timescale(s)	<p>Review of identified Pathways / Redesign Opportunities- Post Project Evaluation still taking place</p> <p>Risk Stratification/ MDT Model- Options appraisal to undertaken at local level still underway</p>	<p>VI practices not mobilised in at scale hubs until August</p> <p>care navigation READ codes unable to be utilised</p> <p>Q4 data to monitor clinical assessment services unavailable</p>	<p>Develop Practice Nurse Strategy, consult and finalise ready for approval</p> <p>PN 10PT AP- 1- Work with Group Managers and the CEPN to consolidate workforce plans and provide intelligence on local nursing workforce needs</p> <p>PN 10PT AP- 3- work with uni sites to identify student placement sites and provide mentor training inline with NMC Standards</p> <p>PN10 PT AP- 5- Plan to be developed to confirm how links will be made</p>



Work Programme Overview – Primary Care Strategy

	IT	Estates	Contracting
No of Live Activities	1	3	2
No Closed Activities	6	10	5
Quarter 2 Priorities	Discussions required for remaining 2 TPP practices Go Live- Mental Health, soccil care and community Feeds Practice visits for patient online promotion test, implement and roll out of video consultation solution testing of online triage monitor and adress issues around ERS text messaging solution fully installed and training complete	Business Case development and approval by Local Estates Forum approval Undertake utilisation surveys to determine usage of buildings generally and look for oportunities for underutilised rooms Seek assurance from Practices on leases- Bilston Central Clinic, Whitmore reans HC, East Park Deadline for Dr Whitehouse relocation Start refresh prioritisation work	Undertake Post Payment Variations QOF+ Monitoring Evaluation/Review of specifications for PC Enhanced Services Finalise new wound care specification/tariff Finalise/sign off new process for PC Contract Monitoring Practice Visits (PCCC) Monitor group level activity Procurement evaluation of APMS Complete Commissioning Intentions (19/20)
Exception(s) to Critical Path Timescale(s)	Go Live Acute Data Feed Testing Mental Health Feed Finalise spec Social Care feed		Review Final Payment 17/18



Primary Care Strategy – Progress

Practices as Providers

- Frailty pathway pilot concluded; evaluation on-going
- Mental Health pathways redesign in discussion
- Diabetes pathway redesign is being supported by PCH1 potential Diabetes clinic
- Delivery against contracts reviewed and gaps identified
- Targeted peer review outcomes presented to T&F group

Workforce

- Training needs analysis for non clinical roles has taken place
- Workforce dashboard is in place
- 4 CCT fellowship roles have been places across the STP; further recruitment will take place September
- Recruitment has taken place on both LinkedIn and RCGP websites
- Benefits realisation analysis has been completed
- STP wide Practice Nurse Strategy is out for consultation

Estates

- Business case is being developed for the BCF hub sites of Bushbury/ Low hill, Bilston and St peters
- Utilisation surveys, review of room types and void space are on-going
- Meetings with NHS property services and practises involved in ETTF are arranged
- Potential sites for Dr Whitehouse relocation have been identified

General Practice as Commissioners

- Monitoring and quality process is being established through the development of a dashboard; q4 data has been discussed at T&F group
- Monitoring plans for Advice and Guidance are in place
- Care navigation cohort 2 have been scoped and are on schedule for implementation September 2018.
- SAS is currently out for expressions of interest
- QOF+ has been launched and mobilised
- Transformation fund hubs (working at scale) are up and running

IM&T

- 2 more practices have migrated clinical system; 2 remaining to migrate
- Work on shared clinical record is progressing
- Further training has taken place for practices around Mjog and GDPR
- Online consultation pilot launched
- Online triage pilot launched

Contracting

- QOF+ launch, mobilisation and sign up complete;
- PC enhanced services contract completed sign off
- Comprehensive dashboard for contract monitoring is being developed
- APMS options appraisal has been completed
- Pathway changes are being identified to support new way of working and the virtual contract



Work Programme Overview – GPFV

Chapter	Total Number of Projects	Not Started	Achieved & Closed	In Progress within Timescale	Overdue and/or behind schedule
1 Investment	7	0	6	1	0
2 Workforce	27	2	7	18	0
3 Workload	25	2	9	14	0
4 Infra-structure	21	2	9	9	0
5 Care Redesign	5	0	2	3	0
Total(s)	85	6	33	46	0

Over the last quarter, 23 more projects have been started with only 6 not yet started, due to awaiting information from NHSE. A further 15 have been achieved and closed, raising the total to 33. The number of projects in progress has risen from 38 to 46 across the programme.



GPFV – Progress

Chapter 1 Finance

- 1 project achieved and closed this quarter; 1 remains open
- Funding available for indemnity costs incurred through new ways of working- to be allocated
- Mental Health Stakeholder event held in May.
- Mental Health Strategy seeks to integrate Mental Health Nurses in practice groups/localities.

Chapter 3 Workload

- 7 projects started this quarter; 6 closed; 10 are in progress
- Care navigation cohort 2 is ready for the launch in September
- Document management tender has concluded; due to start training sessions once contract has been negotiated
- Royal Wolverhampton Trust E-RS switch off has taken place, with sign off from NHS Digital. Making use of Docman to send letters electronically to reduce requirements for paper letters.

Chapter 2 Workforce

- 8 projects started this quarter; 3 have been closed; 19 are open and in progress
- Black Country General Practice Nurse Strategy 2018 has been drafted and is currently out for comment.
- Procurement of STP training hubs will be taking place over the summer
- STP identified as an intensive support site with funding attached
- 4 post CCT fellowship placements have been allocated to the STP with RWT as the secondary care host. Further recruitment to commence September
- training needs analysis is underway
- PM framework is due for launch
- Physicians associate roles are being promoted and practice's are expressing their interest

Chapter 4 Infra-Structure

- 5 projects started this quarter; 2 have been closed; 12 are open
- Video consultation software installed in 3 sites for pilot testing, 1 site currently identified for Online Triage with installation date 27th July 2018
- Improving Access has gone up to 25 minutes per patient; we will be at 100% delivery by 1st September

Chapter 5 Care Redesign

- Final remaining project started this quarter; 2 achieved and closed; 3 are in progress
- Delivery of the access commitment is ahead of trajectory; 100% of patients have access, the number of minutes they can access is ahead of the trajectory and will be fully implemented by 1st September. NHSE are fully assured of our delivery.
- MCP contracting explored, ACA preferred solution.



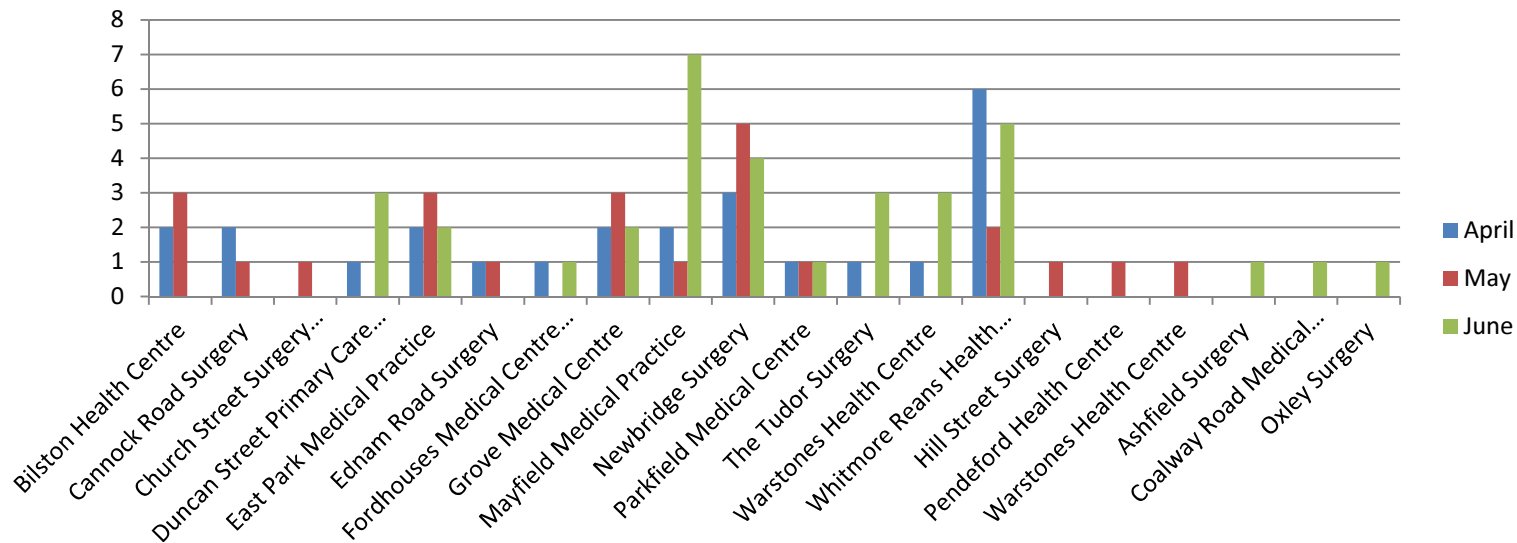
Commissioned Services



Commissioned Services Activity

Social Prescribing

- Referral numbers began to fluctuate over the beginning of the quarter, this has now reversed and referral numbers are increasing
- The project has been successful in attracting further funding from DoH to extend the service
- Social Prescribing will be a care navigation point from September



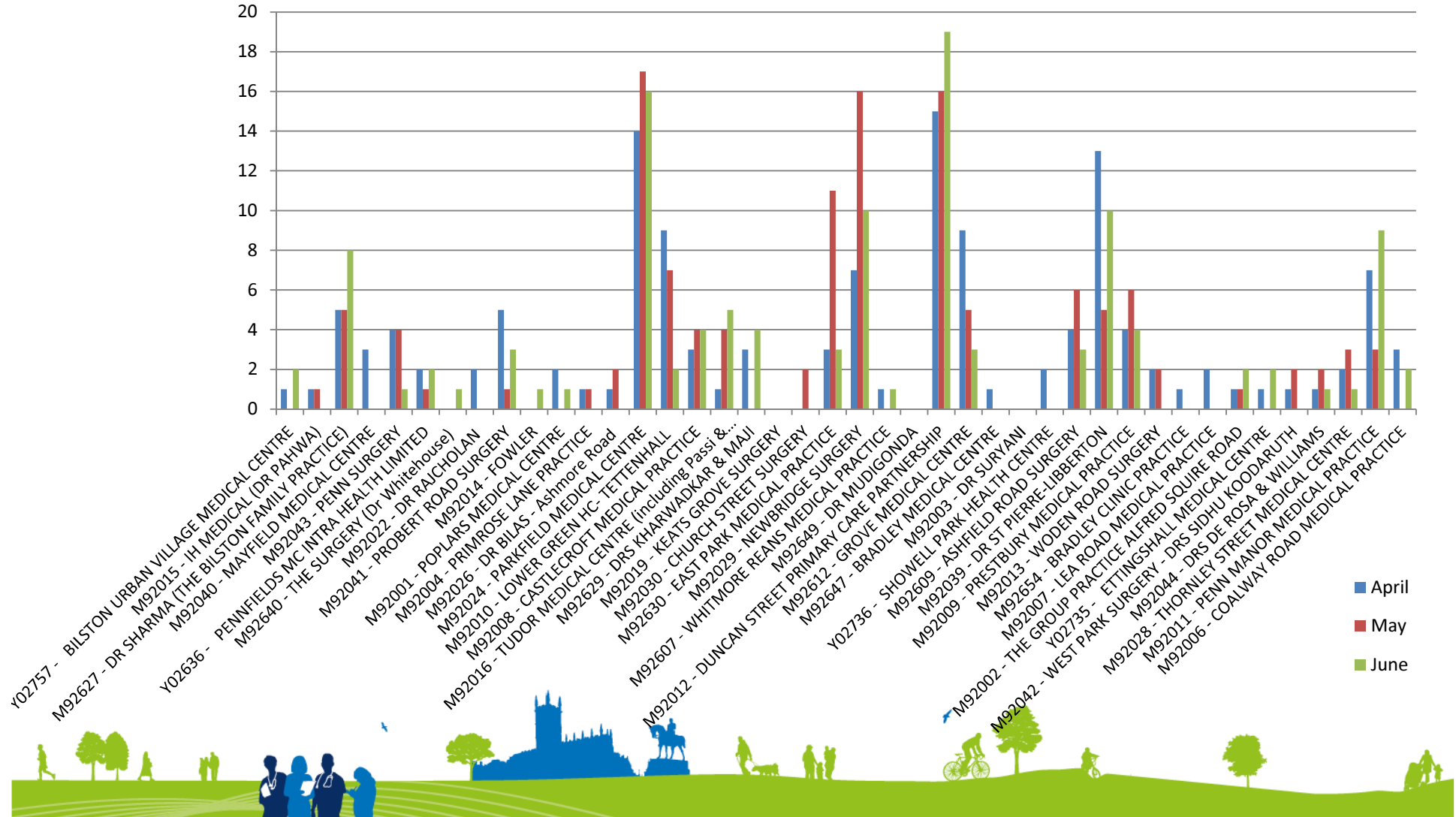
Primary Care Counselling

referral numbers continue to increase; capacity of the service is closely monitored

increase in the number of evening appointments available

pathways between Healthy Minds and the service have been established

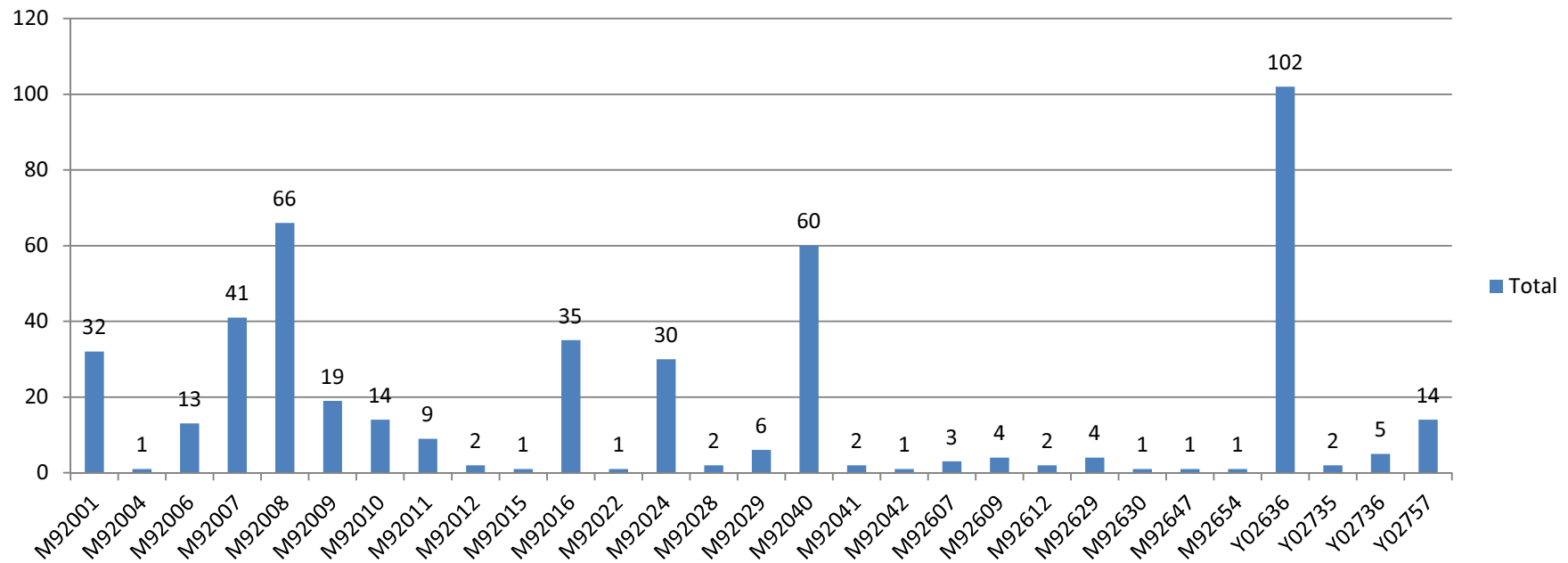
case note audit scheduled to review outcomes not individuals have begun exiting the service



Care Navigation

- Further codes have been identified since the launch, resulting in improved reporting.
- Practices are confident in care navigation, training opportunities are on-going with each practice having staff that have received training.
- Phase 2 is scheduled and ready for launch in September.

Care Navigation recorded activity from 1st February 2018- 1st June 2018



Enhanced Services



Improving Access

April				
Day of the month	Available	Booked	DNAs	Utilisation
1	101	41	4	37%
2	184	106	5	55%
3	5	5	1	80%
4	5	3	0	60%
5	17	13	0	76%
6	5	4	0	80%
7	130	98	17	62%
8	48	16	2	29%
9	11	11	0	100%
10	17	13	0	76%
11	5	5	0	100%
12	10	6	1	50%
13	5	5	0	100%
14	144	87	15	50%
15	42	6	3	7%
16	16	15	0	94%
17	17	12	1	65%
18	5	5	1	80%
19	10	10	0	100%
20	5	4	2	40%
21	144	48	18	21%
22	64	22	3	30%
23	16	10	1	56%
24	17	15	0	88%
25	5	1	0	20%
26	10	7	1	60%
27	5	5	0	100%
28	144	89	24	45%
29	64	42	9	52%
30	16	16	1	94%

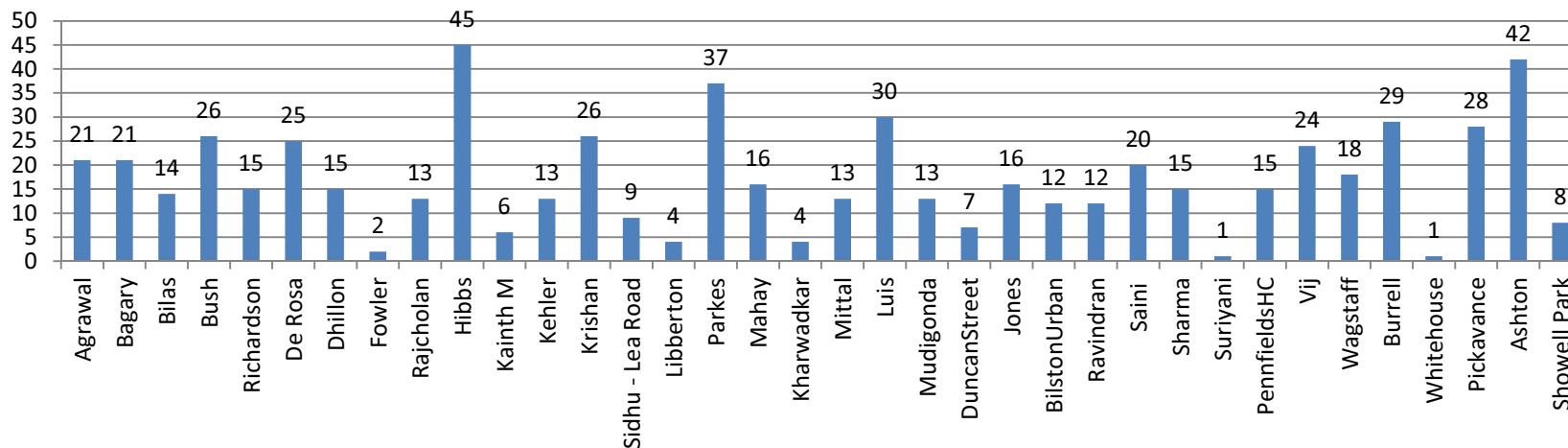
May				
Day of the month	Available	Booked	DNAs	Utilisation
1	101	41	4	37%
2	184	106	5	55%
3	5	5	1	80%
4	5	3	0	60%
5	17	13	0	76%
6	5	4	0	80%
7	130	98	17	62%
8	48	16	2	29%
9	11	11	0	100%
10	17	13	0	76%
11	5	5	0	100%
12	10	6	1	50%
13	5	5	0	100%
14	144	87	15	50%
15	42	6	3	7%
16	16	15	0	94%
17	17	12	1	65%
18	5	5	1	80%
19	10	10	0	100%
20	5	4	2	40%
21	144	48	18	21%
22	64	22	3	30%
23	16	10	1	56%
24	17	15	0	88%
25	5	1	0	20%
26	10	7	1	60%
27	5	5	0	100%
28	144	89	24	45%
29	64	42	9	52%
30	16	16	1	94%

June				
Day of the month	Available	Booked	DNAs	Utilisation
1	5	5	1	80%
2	254	203	19	72%
3	50	25	2	46%
4	19	17	1	84%
5	17	17	1	94%
6	5	5	0	100%
7	10	11	3	80%
8	5	6	1	100%
9	254	201	18	72%
10	50	18	3	30%
11	16	15	1	88%
12	17	16	2	82%
13	5	5	0	100%
14	10	10	0	100%
15	5	5	0	100%
16	272	221	16	75%
17	50	25	0	50%
18	19	18	2	84%
19	35	29	10	54%
20	5	3	0	60%
21	10	10	0	100%
22	5	5	0	100%
23	284	201	16	65%
24	50	30	3	54%
25	19	21	2	100%
26	35	29	10	54%
27	5	5	0	100%
28	10	11	4	70%
29	5	4	1	60%
30	249	207	16	77%

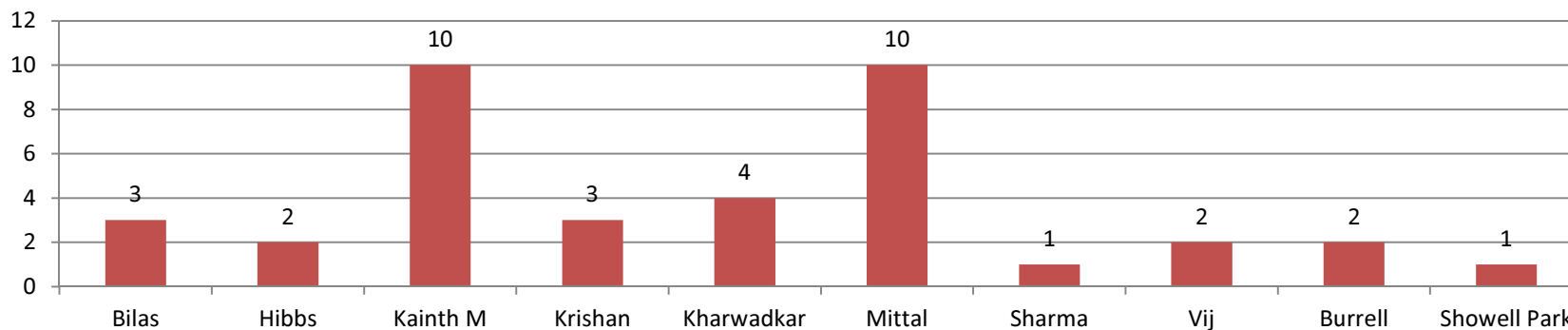


Primary Care Basket Services

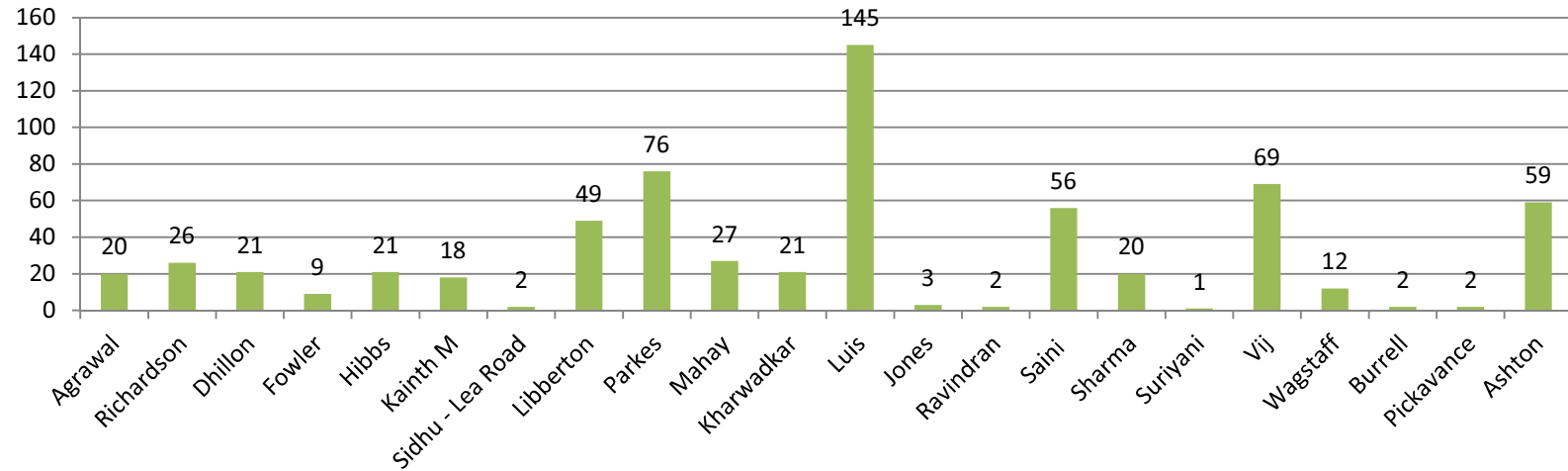
Suture/Clip/Staple Removal



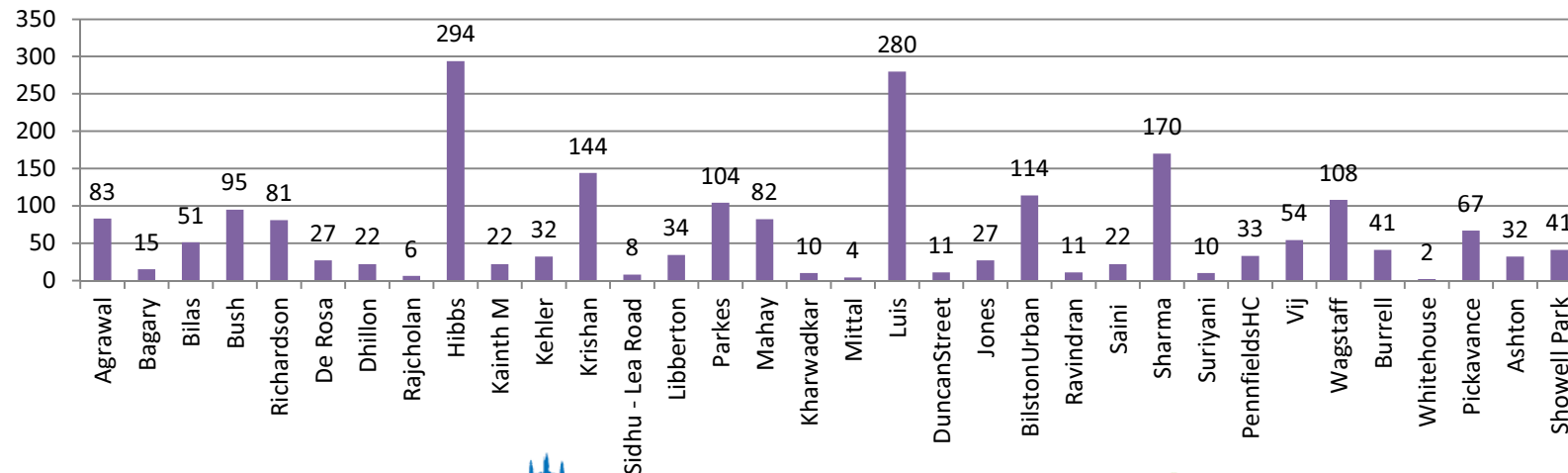
Pre-Op Check



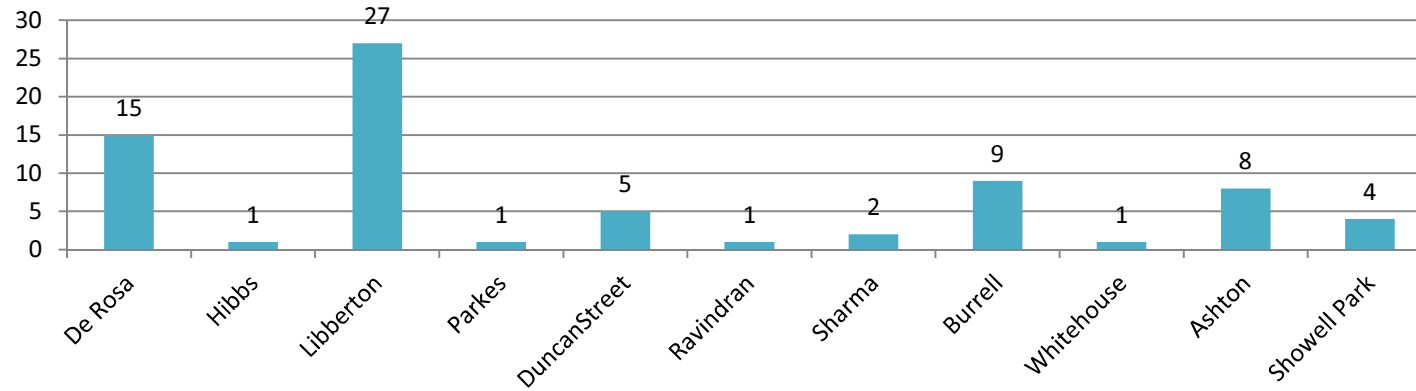
Dressing Changes - post secondary care treatment - COMPLEX



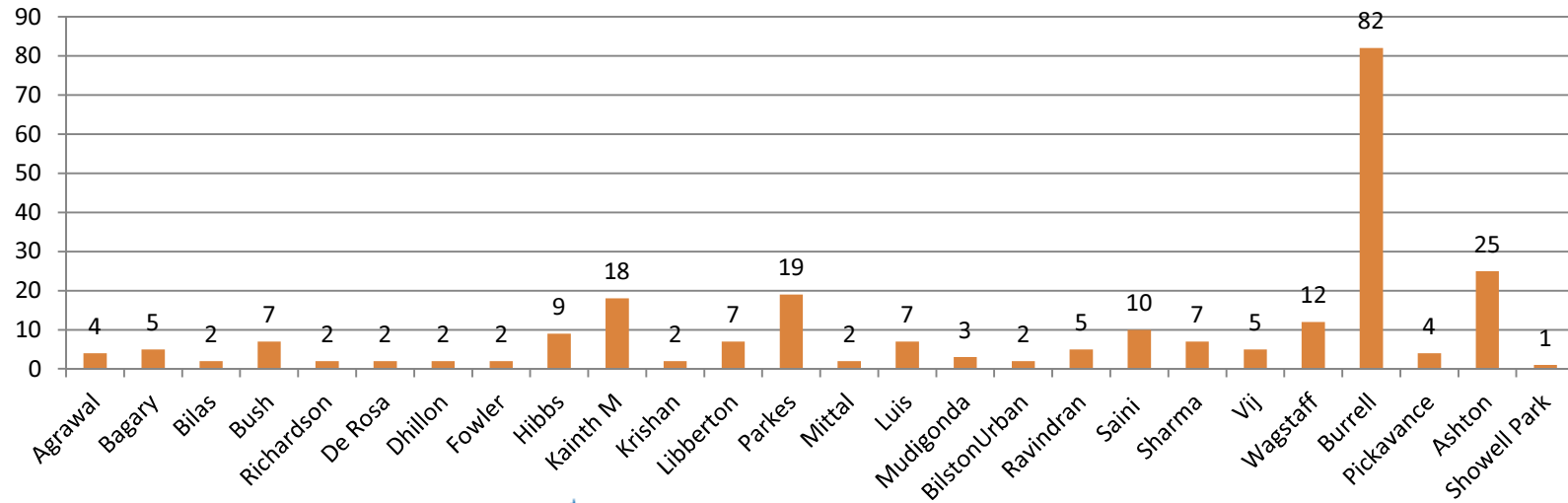
Dressing Changes - post secondary care treatment - SIMPLE



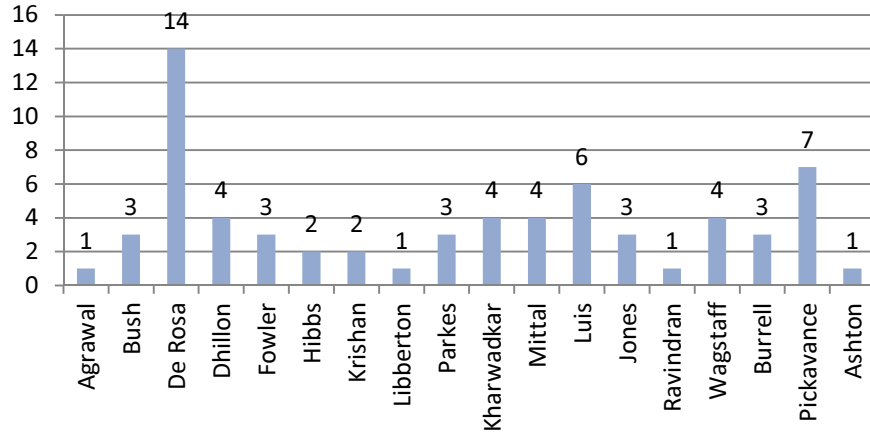
12 lead ECG's as part of pre-op or at request of secondary care



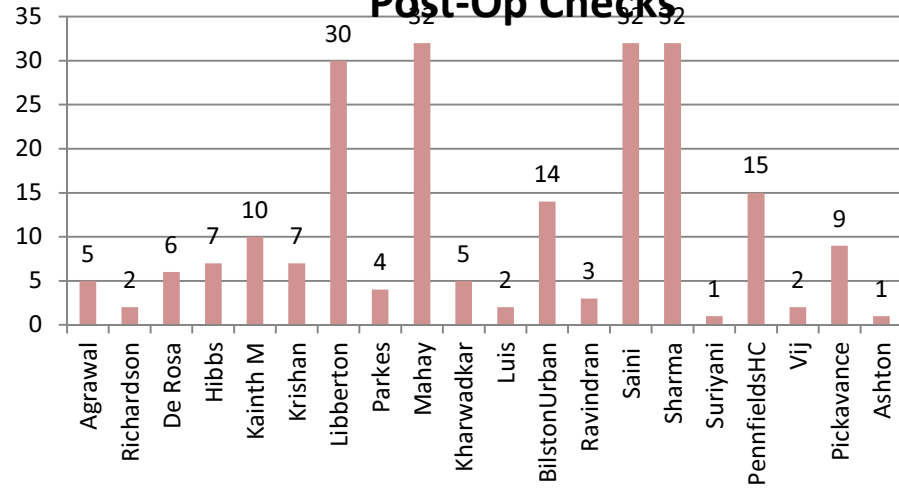
Ear Syringes as part of audiology prep



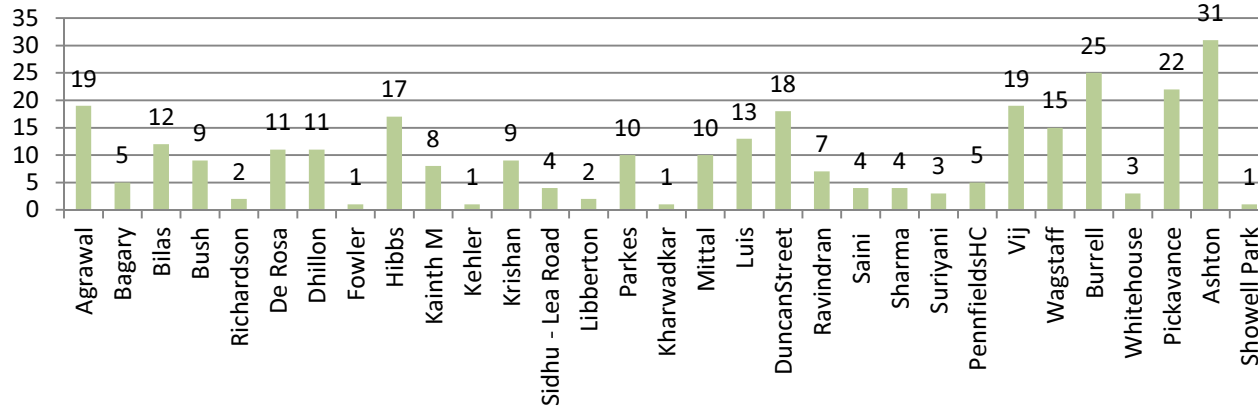
Pessary Changes



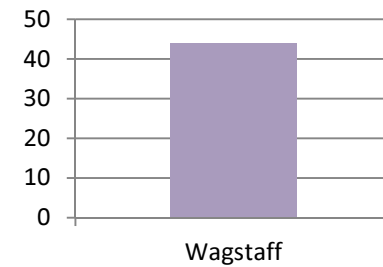
Post-Op Checks



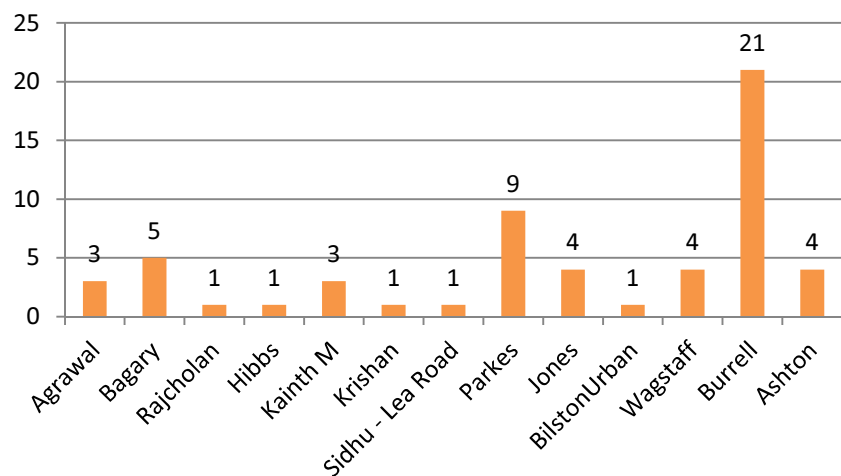
Admin of Gonadorelin (Zoladex and Prostrap) Hormone Implants



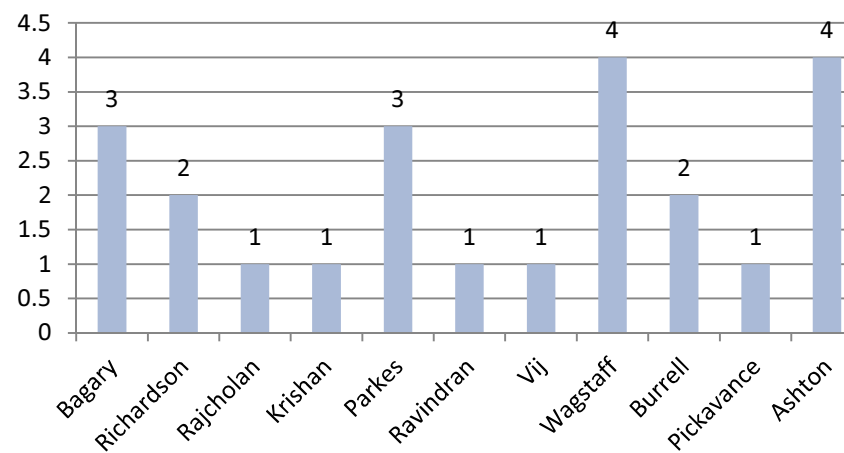
Subcutaneous injection of Heparin - only where a patient or carer is unable to self-administer



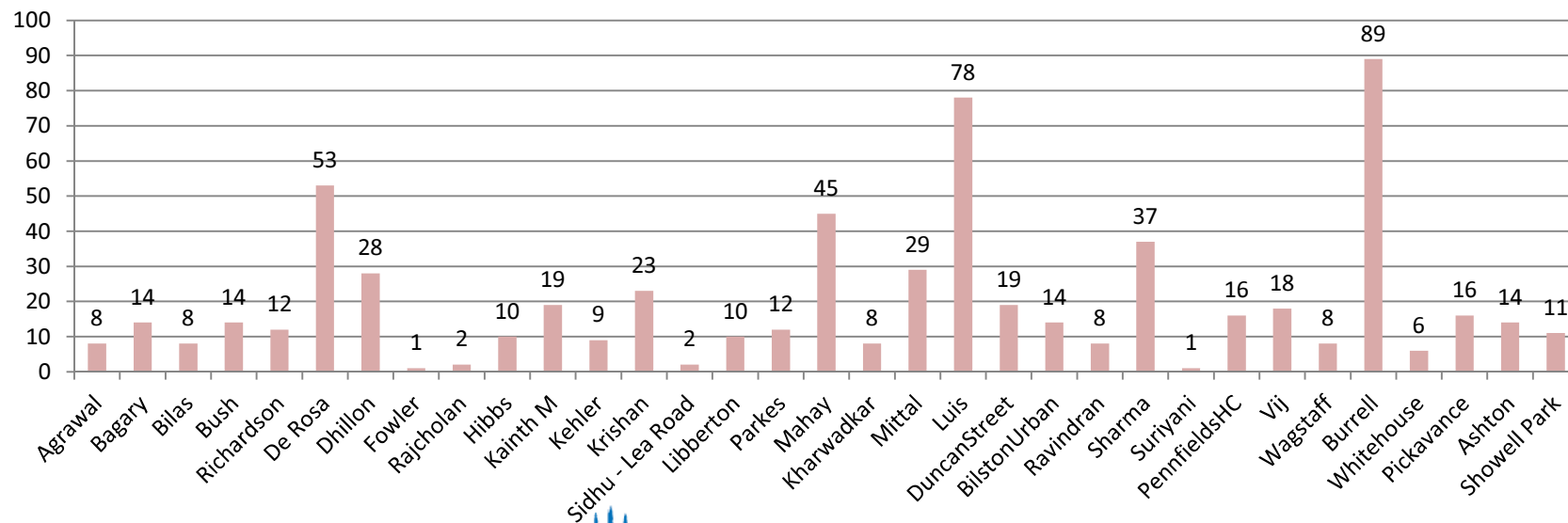
Testosterone



Denosumab



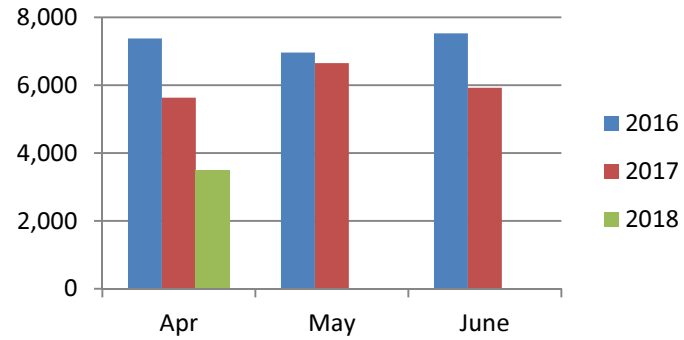
Minor Injuries



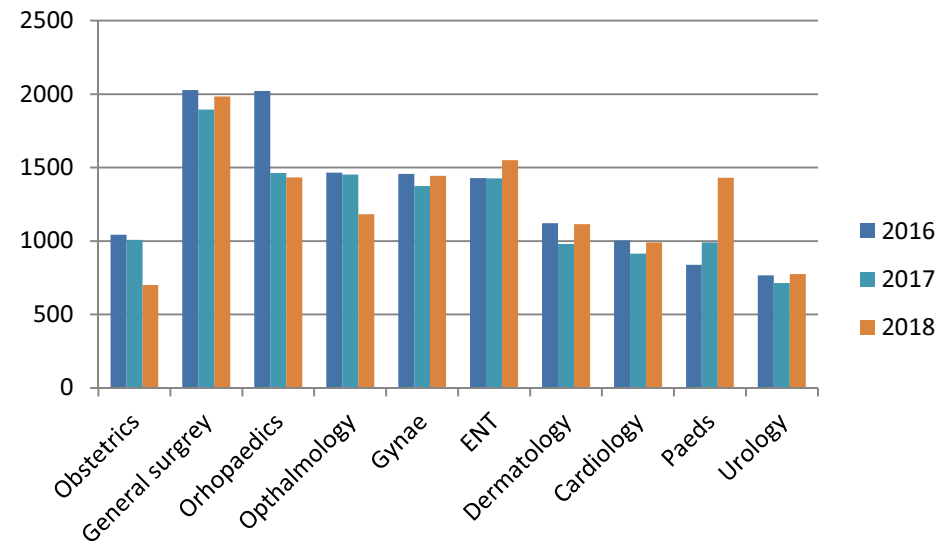
Practice Group Referrals



All Specialties



Referrals to specialties- Q1



Referral data reviewed as part of Peer Review

